

2006

Johnson

Service Manual
3.5 HP
2 STROKE

Johnson®



INTRODUCTION

MODELS COVERED IN THIS MANUAL

MODELS COVERED IN THIS MANUAL

This manual covers service information on *Johnson* 3.5 HP 2-Stroke models. Use this manual together with the proper Parts Catalog for part numbers and for exploded views of the outboard, which are a valuable aid to disassembly and reassembly.

Model Number	Start	Shaft	Steer
J3RSDE	Rope	15"	Tiller

Identifying Model and Serial Numbers

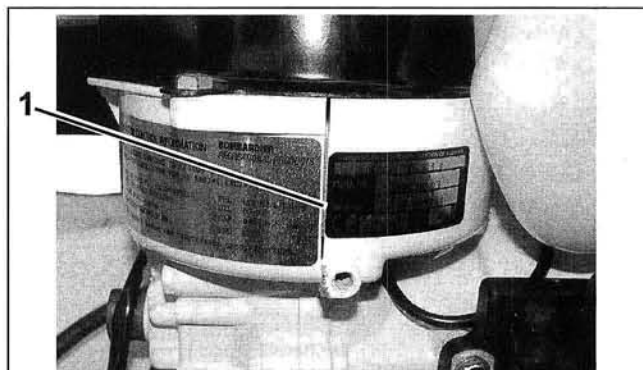
Outboard model and serial numbers are located on the swivel bracket and on the powerhead.



3.5 Swivel Bracket

001293

1. Model and serial number



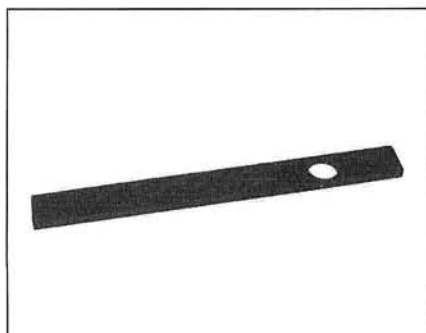
3.5 HP Powerhead

001294

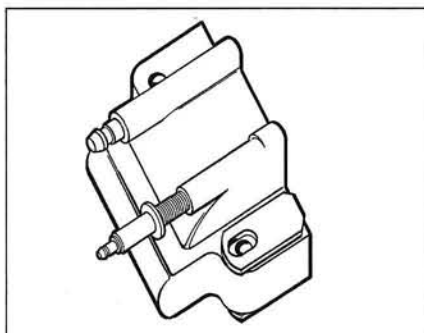
1. Serial number

SERVICE SPECIFICATIONS AND SPECIAL TOOLS

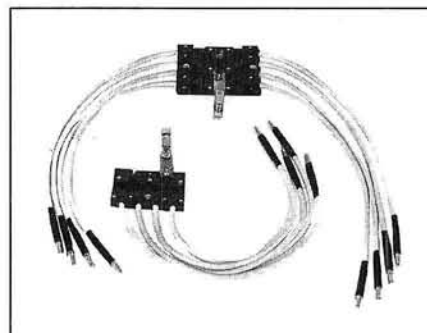
SPECIAL TOOLS



Flywheel holder
P/N 115315 32611



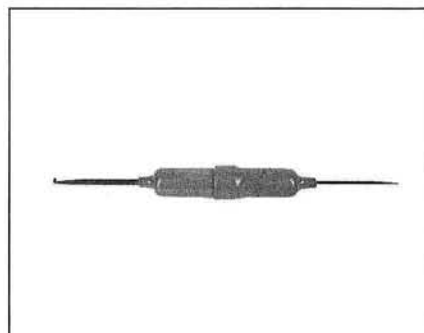
Ignition coil terminal extender
P/N 502054 CO3010



Spark checker
P/N 508118 49798



Ignition analyzer
P/N 501890 49791

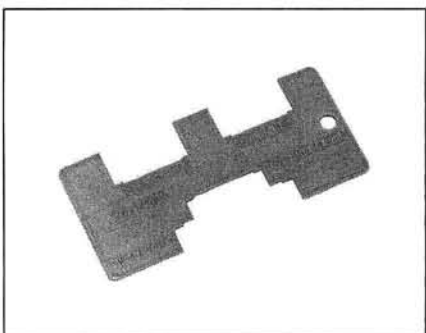


Removal tool
P/N 342667 42004



Tachometer/timing light
P/N 507980 49789

Fuel



Float gauge
P/N 324891 23678



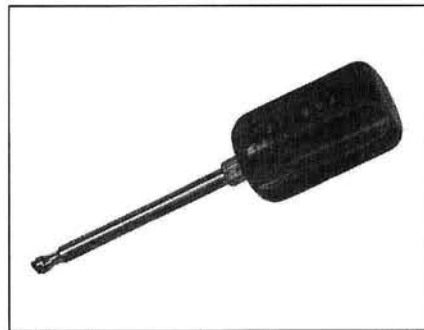
Nipple cleaning tool
P/N 326623 23655



Orifice plug screwdriver
P/N 390542 23103



Fuel vacuum tester
P/N 390954 23286



Orifice plug screwdriver
P/N 317002 23611