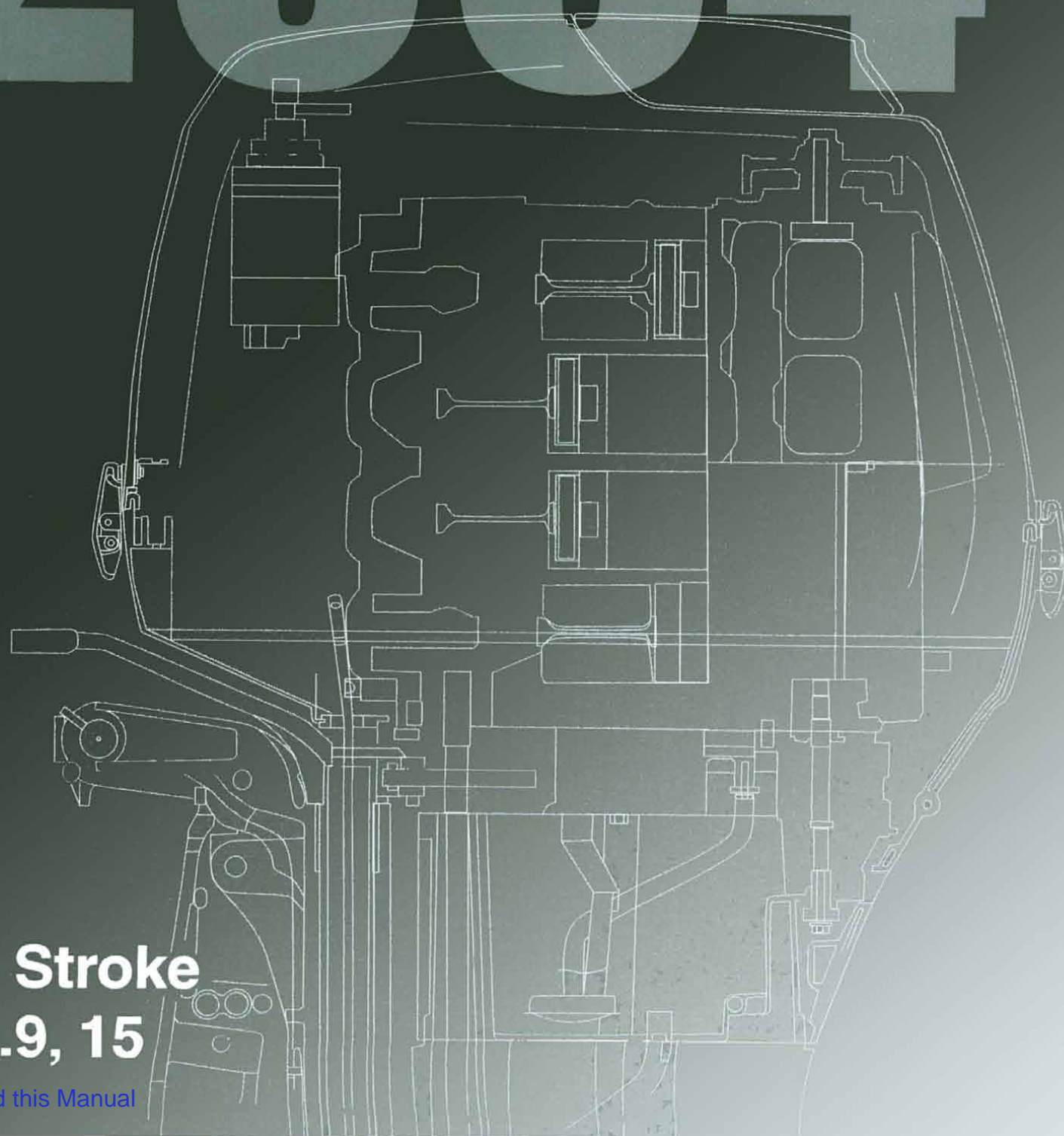


Service Manual

Johnson®



4 Stroke
9.9, 15

[Download this Manual](#)

GENERAL INFORMATION

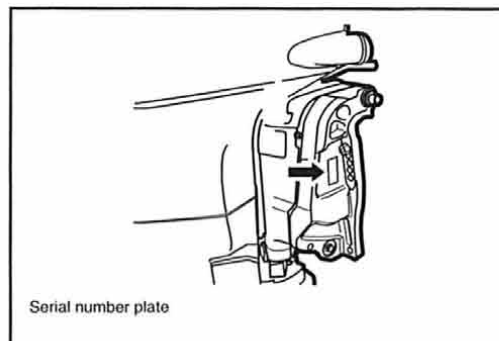
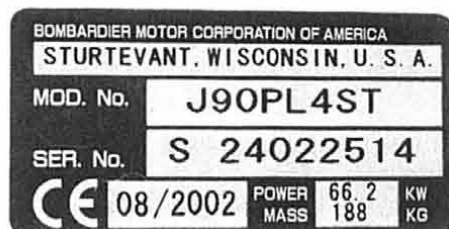
IDENTIFICATION NUMBER LOCATION

IDENTIFICATION NUMBER LOCATION

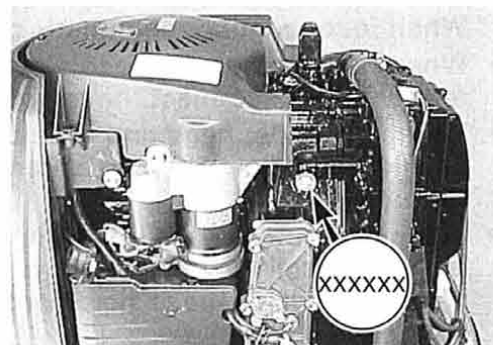
MODEL, PREFIX, SERIAL NUMBER

The MODEL, PREFIX and SERIAL NUMBER of the motor are stamped on a plate attached to the clamp bracket.

Example



Typical placement example



ENGINE SERIAL NUMBER

A second engine serial number plate is pressed into a boss on the cylinder block.

FUEL AND OIL

Gasoline Recommendation

Bombardier highly recommends that you use alcohol-free unleaded gasoline with a minimum pump octane rating of 87 (R+M / 2 method) or 91 (Research method). However, blends of unleaded gasoline and alcohol with equivalent octane content may be used.

Allowable maximum blend of a single additive (not combination):

5% Methanol, 10% Ethanol, 15% MTBE

⚠ CAUTION

If leaded gasoline is used, engine damage may result. Use only unleaded gasoline.

Engine Oil

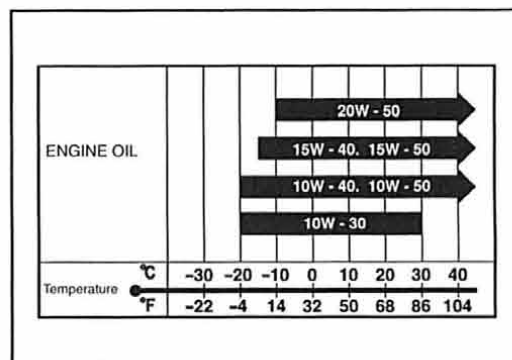
Use only *Evinrude/Johnson* Ultra Four Stroke Oil or oils that are rated SE, SF, SG, SH, or SJ under the API (American Petroleum Institute) classification system.

The viscosity rating should be SAE 10W-40.

If an SAE 10W-40 motor oil is not available, select an alternative according to the chart at right.

• BREAK-IN (First 10 Hours)

Use only *Evinrude/Johnson* Four Stroke Oil or SAE 10W-40, API SE, SF, SG, SH, or SJ rating.



SPECIFICATIONS

These specifications are subject to change without notice.

Item	Unit	Data					
		10R	10TE	10EL	15R	15TE	15EL

DIMENSIONS AND WEIGHT

Overall length (front to back)		mm (in)	1005 (39.6)					
Overall width (side to side)		mm (in)	320 (12.6)					
Overall height	S	mm (in)	1095 (43.1)					
	L	mm (in)	1220 (48.0)					
Weight	S	kg (lb)	44.0 (97.0)	47.5 (104.7)	46.5 (102.5)	44.0 (97.0)	47.5 (104.7)	46.5 (102.5)
	L	kg (lb)	45.0 (99.2)	48.5 (106.9)	47.5 (104.7)	45.0 (99.2)	48.5 (106.9)	47.5 (104.7)
Transom height	S	mm (in type) position	427 (15) [3]					
	L	mm (in type) position	554 (20) [3]					

PERFORMANCE

Maximum output	kW (HP)	7.3 (9.9)	11.0 (15)
Recommended operating range	rpm	4500 – 5500	5400 – 6000
Idle speed	rpm	1100 ± 50	
In-gear idle speed	rpm	Approx. 1000	

POWERHEAD

Engine type		4-stroke SOHC			
Number of cylinders		2			
Bore	mm (in)	58.0 (2.28)			
Stroke	mm (in)	57.0 (2.24)			
Total displacement	cm ³ (cu in)	302 (18.4)			
Compression ratio	: 1	9.0			
Spark plug	NGK	DCPR6E			
Intake system		Carburetor			
Exhaust system		Through prop hub exhaust			
Cooling system		Water cooled			
Lubrication system		Wet sump by trochoid pump			
Starting system		Manual	Electric	Manual	Electric
Choke system		Manual	Electric	Manual	Electric
Throttle control		Twist grip	Remote control	Twist grip	Remote control
Ignition system		CDI			