

GENERAL INFORMATION

MODEL INFORMATION 1.2

- MODEL IDENTIFICATION 1.2
- ENGINE DESIGNATION NUMBERS 1.2
- VIN IDENTIFICATION 1.2
- ENGINE SERIAL NUMBER LOCATION 1.2
- VEHICLE IDENTIFICATION NUMBER LOCATION 1.2

GENERAL SPECIFICATIONS 1.3

- MODEL: 2008 PREDATOR 50 1.4
- MODEL: 2008 OUTLAW / SPORTSMAN 90 1.5

MISCELLANEOUS INFORMATION 1.6

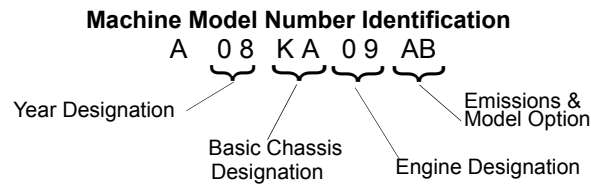
- PUBLICATION NUMBERS 1.6
- PAINT CODES 1.6
- REPLACEMENT KEYS 1.6
- SPECIAL TOOLS - WHERE USED 1.7
- STANDARD TORQUE SPECIFICATIONS 1.8
- CONVERSION TABLE 1.9
- SAE TAP DRILL SIZES 1.10
- METRIC TAP DRILL SIZES 1.10
- DECIMAL EQUIVALENTS 1.10
- GLOSSARY OF TERMS 1.11

GENERAL INFORMATION

MODEL INFORMATION

Model Identification

The machine model number must be used with any correspondence regarding warranty or service.

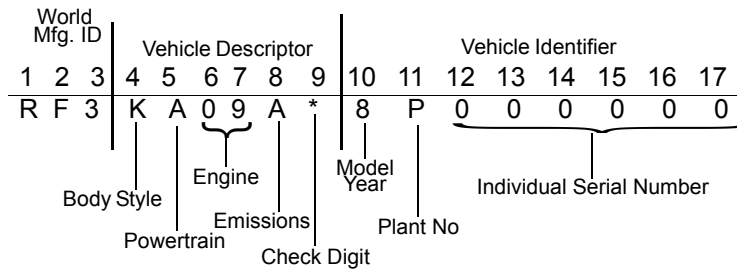


Engine Designation Numbers

50cc Model: M10A - Single Cylinder, Air Cooled, SOHC, 4-Stroke, Electric Start

90cc Model: H18S - Single Cylinder, Air Cooled, SOHC, 4-Stroke, Electric Start

VIN Identification



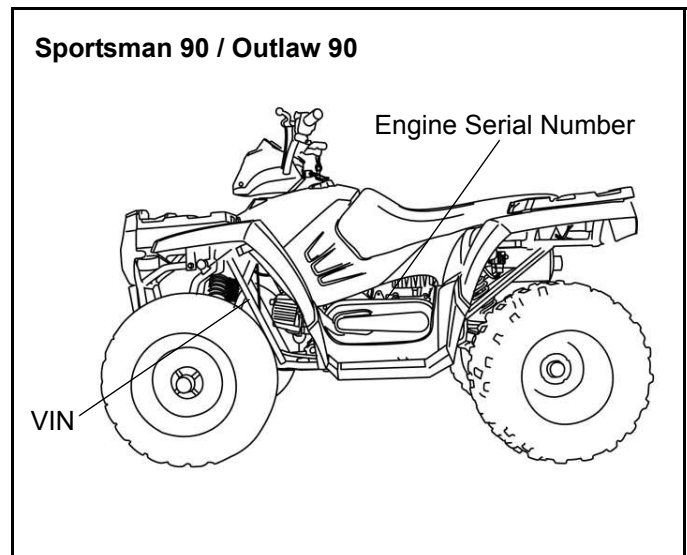
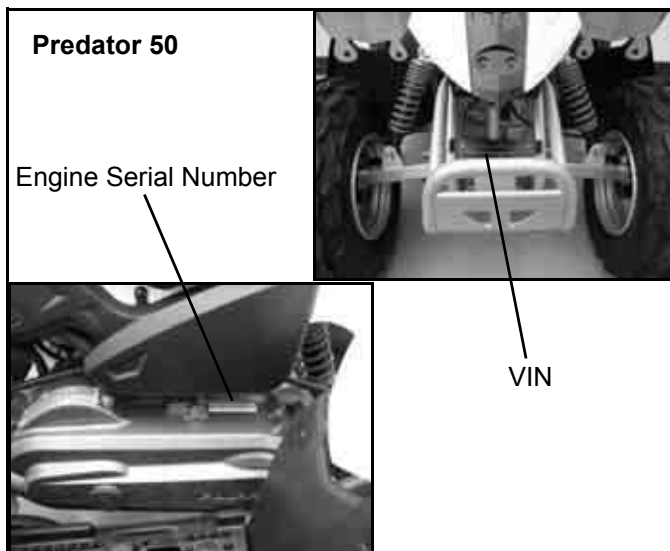
* This could be either a number or a letter

Engine Serial Number Location

Whenever corresponding about an engine, be sure to refer to the engine serial number. This information can be found stamped on the top LH side of the crankcase as shown below.

Vehicle Identification Number Location

The vehicle identification number (VIN) and engine serial number are important for identification purposes. See the illustrations below as a location reference.



GENERAL SPECIFICATIONS

MODEL.....2008 PREDATOR 50
MODEL NUMBER.....A08KA05AB, AD
ENGINE MODEL.....M10A

Category	Dimension
Length	48 in. / 122 cm
Width	31.5 in. / 80 cm
Height	28 in. / 71 cm
Wheel Base	33 in. / 84 cm
Ground Clearance	4 in. / 10 cm at Swing Arm
Rider Capacity / Max. Weight	1 rider / 90 lbs. / 41 kg
Dry Weight	185 lbs. / 84 kg
Oil Capacity	30 oz. / 900 ml
Fuel Capacity	1.2 gal / 4.5L



MODEL.....2008 OUTLAW 90
MODEL NUMBER.....A08KA09AB,AC,AD
ENGINE MODEL.....H18S

Category	Dimension
Length	61.25 in. / 156 cm
Width	36.75 in. / 93 cm
Height	38.5 in. / 98 cm
Wheel Base	41.5 in. / 105 cm
Ground Clearance	4 in. / 10 cm at Swing Arm
Rider Capacity / Max. Weight	1 rider / 170 lbs. / 77 kg
Dry Weight	283 lbs. / 128 kg
Oil Capacity	30 oz. / 900 ml
Fuel Capacity	1.7 gal. / 6.4 L



MODEL.....2008 SPORTSMAN 90
MODEL NUMBER.....A08FA09AA,AB,AC
ENGINE MODEL.....H18S

Category	Dimension
Length	61.75 in. / 157 cm
Width	36.75 in. / 93 cm
Height	38.5 in. / 98 cm
Wheel Base	41.5 in. / 105 cm
Ground Clearance	4 in. / 10 cm at Swing Arm
Rider Capacity / Max. Weight	1 rider / 170 lbs. / 77 kg
Dry Weight	305 lbs. / 138 kg
Oil Capacity	30 oz. / 900 ml
Fuel Capacity	2 gal. / 7.7 L
Front Rack Capacity	15 lbs. / 6.8 kg
Rear Rack Capacity	30 lbs. / 13.6 kg

