
TABLE OF CONTENTS

SECTION	SUBSECTION	PAGE
SAFETY NOTICE		III
WHAT'S NEW		IV
INTRODUCTION		V
01	SERVICE TOOLS AND SERVICE PRODUCTS	
	01 – Table of contents.....	01-01-1
	02 – Service tools.....	01-02-1
	03 – Service products.....	01-03-1
02	MAINTENANCE	
	01 – Table of contents.....	02-01-1
	02 – Maintenance chart.....	02-02-1
	03 – Maintenance and lubrication	02-03-1
	04 – Storage and pre-season preparation.....	02-04-1
03	ENGINE	
	01 – Table of contents.....	03-01-1
	02 – Removal and installation.....	03-02-1
	03 – Cooling system.....	03-03-1
	04 – Rewind starter.....	03-04-1
04	FUEL SYSTEM	
	01 – Table of contents.....	04-01-1
	02 – Fuel circuit	04-02-1
	03 – Carburetor and fuel pump	04-03-1
	04 – Air intake silencer	04-04-1
05	ELECTRICAL	
	01 – Table of contents.....	05-01-1
	02 – Overview	05-02-1
	03 – Charging system	05-03-1
	04 – Starting system	05-04-1
	05 – Ignition system.....	05-05-1
	06 – Electric shift system.....	05-06-1
	07 – Instruments and accessories	05-07-1
06	DRIVE TRAIN	
	01 – Table of contents.....	06-01-1
	02 – Front differential.....	06-02-1
	03 – Rear axle.....	06-03-1
07	STEERING/CONTROL SYSTEM	
	01 – Table of contents.....	07-01-1
	02 – Steering/control systems	07-02-1
08	SUSPENSION	
	01 – Table of contents.....	08-01-1
	02 – Front suspension.....	08-02-1
	03 – Rear suspension.....	08-03-1
09	BRAKES	
	01 – Table of contents.....	09-01-1
	02 – Hydraulic brakes	09-02-1

TABLE OF CONTENTS

SECTION	SUBSECTION	PAGE
10 BODY/FRAME	01 – Table of contents	10-01-1
	02 – Body	10-02-1
	03 – Frame	10-03-1
11 TECHNICAL DATA	01 – SI metric information guide.....	11-01-1
	02 – Engine and vehicle	11-02-1
12 WIRING DIAGRAM	01 – Wiring diagram	12-01-1

INTRODUCTION

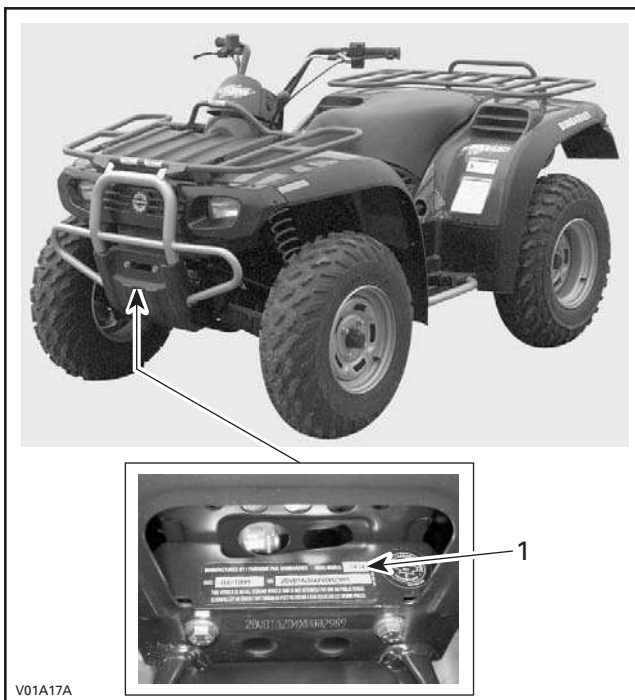
This *Shop Manual* covers the following Bombar-
dier made 1999 ATV:

Models

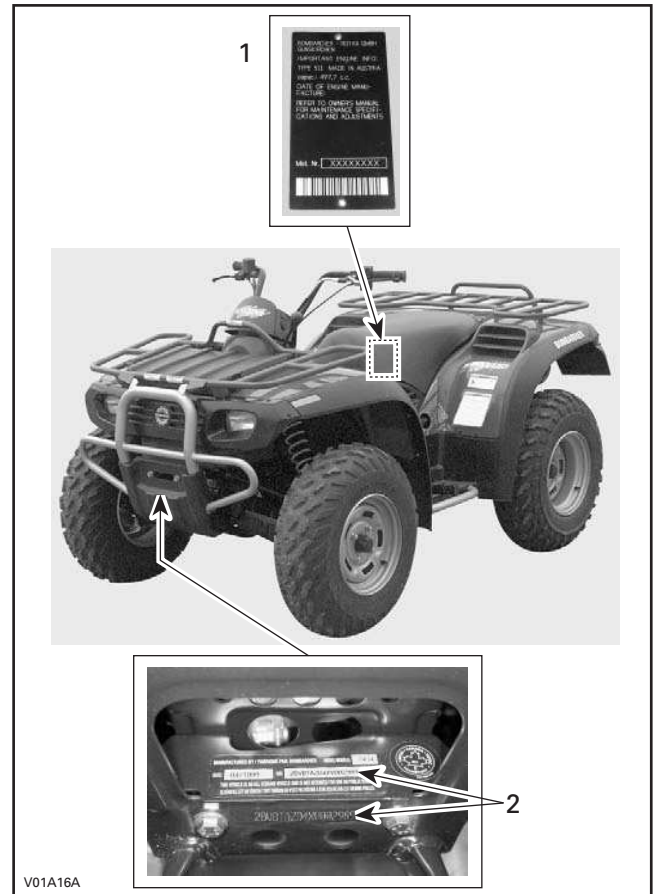
TRAXTER* (Canada)	7400
TRAXTER* (Canada)	7413
TRAXTER* (Canada)	7415
TRAXTER* (Canada)	7417
TRAXTER* (U.S.).....	7401
TRAXTER* (U.S.).....	7414
TRAXTER* (U.S.).....	7416
TRAXTER* (U.S.).....	7418

*Trademark of Bombardier Inc.

VEHICLE AND ENGINE SERIAL NUMBER LOCATION



1. Model number



1. Engine
2. Vehicle